

PARK HOUSE

X

STEFANIA NAZZAL

Lucid Dreams

A color turns and shifts in gradient. Beyond a plane's oval window, the horizon stretches endlessly. As the sun sets beneath hazy clouds, the mind wanders. These are the fleeting moments that Stefania Nazzal captures in her latest body of work. In a kind of fullness that is attained when one empties the mind and escapes, she alludes to states of consciousness that impart a sharp sensory awareness. As dreamy texts contemplate other ways of being, sheer luminescence promises a world of our own making. It is a world that Nazzal understands.

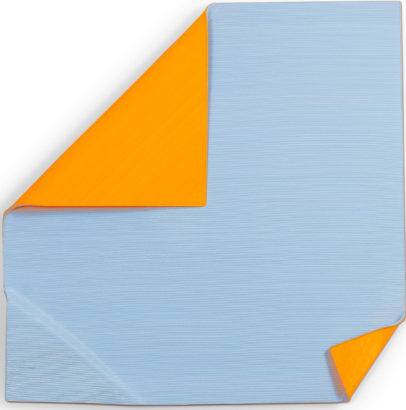


Where color floods the senses Nazzal points to natural phenomena that are all-encompassing. In a deeply layered artistic process, she meticulously chooses every component and shift in tone as a means of dissecting colors we see in nature and those we don't. There's a notion of plenitude in the way hues conjoin and shimmer. Her seemingly contained works incorporate a rich palette of PVC strings that teeter between solidity and fluidity. She has mastered materials, which, known for more pliable forms in friendship bracelets and keychains, are now sculptural flows that stream like thoughts.

In a new series of work, *Is This The True Story* (2024), Nazzal moves from the sky as her canvas to a monochrome page in which she invites the viewer in. In three gestural forms akin to crumpled paper, she subtly distorts her streaming lines, removing elements of her former work in order to begin anew. Color is subdued and gradient disappears. A steely pastel blue is interrupted by the shock of a bright orange on the backside. By not revealing the full image as flat, Nazzal marks an in-between state, starting and stopping to witness and question reality as one might in a lucid dream.

In this subjective world, a sense of control is relinquished and an unknown narrative unfolds. Revealing traces of her creative process, her new series offers the viewer a peek into the capsule of her mind, in which movement towards another story is shown as a progression, a freeze frame of three moments in time — the idea of suspension. The works unravel and open out from the wall and away from the notion of a solid frame.

STEFANIA NAZZAL

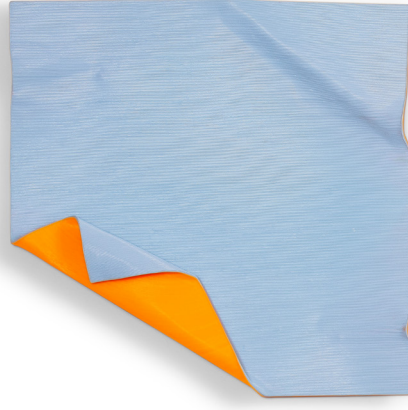


IS THIS THE TRUE STORY (1)

100cm x 100cm / 40" x 40"

PVC strings mounted on Acrylic Sheet.
Available Individually or as a set.

\$7,500 (each)



IS THIS THE TRUE STORY (2)

100cm x 100cm / 40" x 40"

PVC strings mounted on Acrylic Sheet.
Available Individually or as a set.

\$7,500 (each)



IS THIS THE TRUE STORY (3)

100cm x 100cm / 40" x 40"

PVC strings mounted on Acrylic Sheet.
Available Individually or as a set.

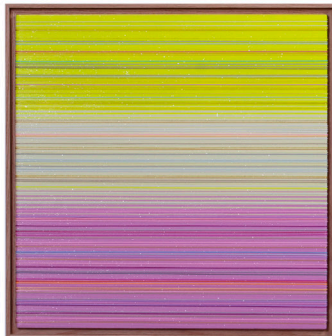
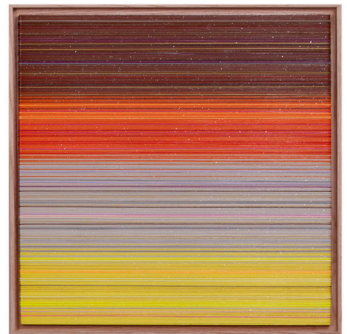
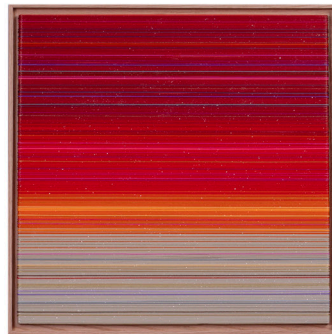
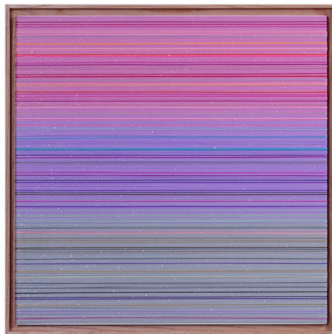
\$7,500 (each)

1

3

5

7



2

4

6

8

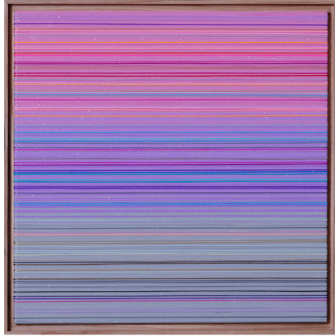
FLEETING MOMENTS (1-8)

75cm x 75cm / 30" x 30" each

PVC Strings and Diamond Dust mounted on wooden board. Oak Frame.
Available Individually or as a set.

\$4,700 each

STEFANIA NAZZAL



FLEETING MOMENTS (9 & 10)

75cm x 75cm / 30" x 30" each

PVC Strings and Diamond Dust mounted on wooden board. Oak Frame.
Available Individually or as a set.

\$4,700 each

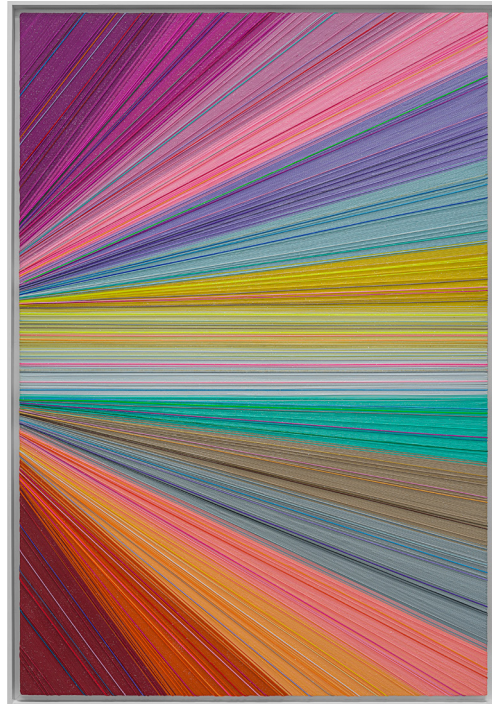
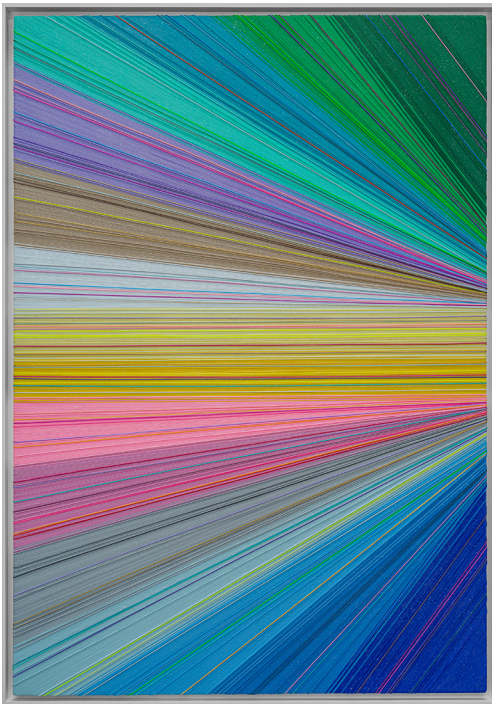


INTO THE HORIZON (3)

75cm x 180cm / 30" x 71"

PVC Strings and Diamond Dust mounted on wooden board. Oak Frame.

\$11,200



SKY HIGH (1 & 2) (DIPTYCH)

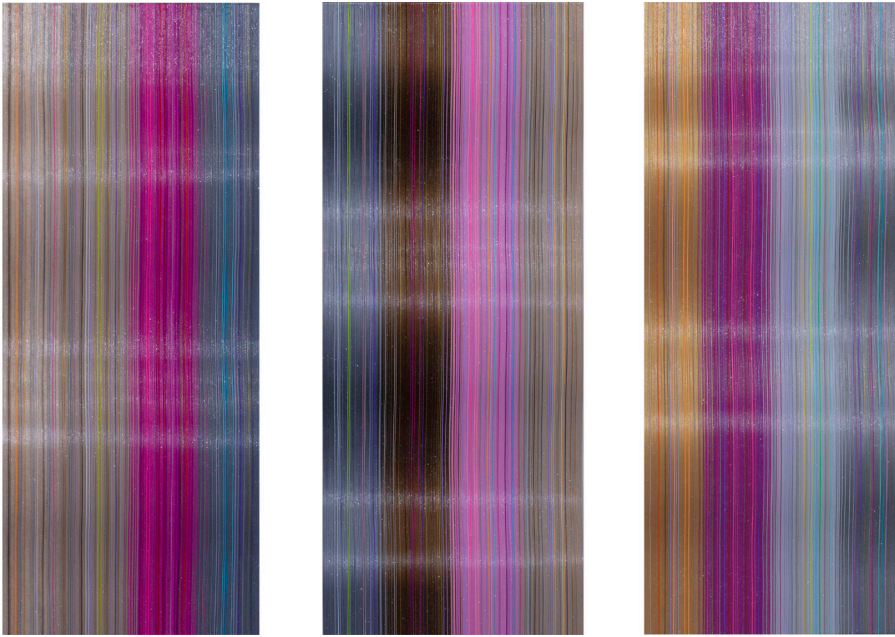
110cm x 160cm / 43" x 63" each

PVC Strings and Diamond Dust mounted on wooden board. White Wooden Frame.
Available Individually or as a set.

\$15,900 (each)

www.stefanianazzal.com

STEFANIA NAZZAL



SOUNDSCAPE (1-3) (TRIPTYCH)

62cm x 150cm / 24.5" x 59" each

PVC Strings and Diamond Dust
mounted on wooden board.
Available Individually or as a set.

\$12,500 (each)



THE STARS WE DON'T SEE

120cm x 130cm / 48" x 51"

PVC Strings and Diamond Dust
mounted on wood. LED Lights.

\$13,800

For sales inquiries

Email: pa@stefanianazzal.com

WhatsApp: +971557677061

Full Catalogue here

