



## APT-50 5.5" ANDROID PAYMENT TERMINAL



## 5.5" SMART POS/ PAYMENT TERMINAL

Time to upgrade your business from those old, bulky payment terminals of the past and get TEAMSable's new generation smart terminal. The APT-50 is a revolutionary device that can be used as a stand-alone mobile POS/payment terminal, or it can be semi-integrated with a traditional POS system. Our forward-thinking smart terminal is ideal for hassle free pay-at-the-table and line busting applications, for example, due to its large 5.5" touchscreen, onboard thermal printer and EMV/MSR/NFC card reader functionality. This latest best-of-breed terminal is Android OS operated, allowing the installation of certified POS Apps that can expand the unit's functionality and decrease cost of ownership. Bottom line...the APT-50 is the perfect choice for today's modern merchant looking for a versatile, secure payment solution with easy POS system integration whether for mobile or stationary applications.

### APT-50 Smart Terminal Features at a Glance:

- Durable 5.5" PCAP Touchscreen
- Responsive 1.2GHz Quad Core CPU
- Snappy Performance 1G DDR3
- Ample 8GB Flash Storage Capacity

## FEATURES



Integrated MSR



Integrated EMV Reader



Built-in Printer



Charging Dock



[www.teamsable.com](http://www.teamsable.com)

1911 Hartog Dr. San Jose, CA 95131



1-408-775-8384



[sales@teamsable.com](mailto:sales@teamsable.com)



# Certification and Software

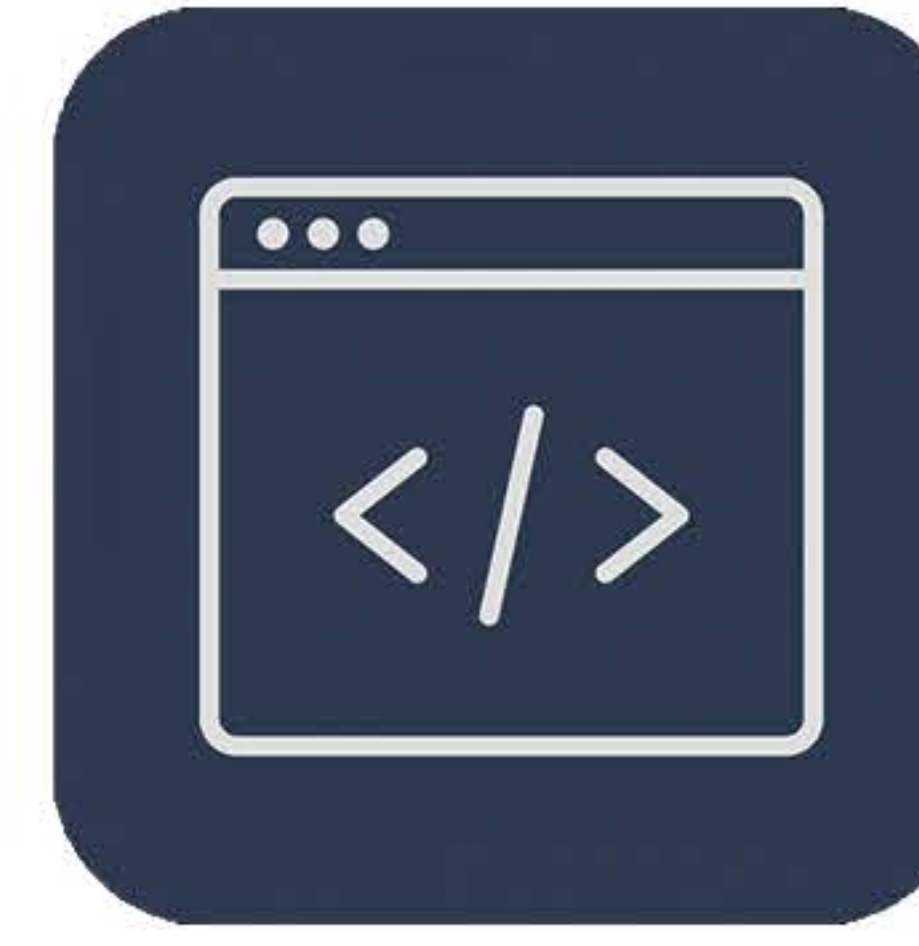
- Supports Major Payment Processors
- PCI 4.X & EMV L3 Certified
- Payment APK Available
- Windows API Available
- Android SDK Available



**Certified  
EMV & PCI**



**Supports  
Major Processors**



**Windows  
API Available**



**Android  
SDK Available**



## APT-50

CPU and Memory		Terminal Ports	
Operating System	Android 5.1	Micro USB	USB OTG x 1
CPU	QuadCore 1.2Hz	SIM Card	1 Slot
Memory	1GB DDR3	PSAM Card	1 Slot
Storage	8GB eMMC	Speaker	Support
TF Socket	Support up to 64GB	Microphone	Support
<b>Display</b>		Headset	3.5mm Jack
Panel	5.5" IPS 1280 x 800	<b>Charging Dock Ports</b>	
Touch	5 Point Capacitive	Micro USB 2.0	x1
<b>Wireless Connectivity</b>		SIM Slot	x1
WIFI	IEEE 802.11b/g/n, WLAN 2.4GHz+5GHz	PSAM Slot	x2
Bluetooth	BLE 4.0 Dual Mode, V4.0+EDR	DC Socket	2.5mm x 1
GPS	Built-in GPS	<b>Power</b>	
Cellular Module	3G and 4G	Power Adapter	Input 100-240V, Output 9.5/1A
<b>Card Reader</b>		Charging Dock	YES
Magnetic Reader	Track 1/2/3, ISO7810&7811, Bi-Directional, PCI 4.X and EMV Co.	<b>Physical Dimension</b>	
IC Chip	ISO 7816, Encrypted head, PCI 4.X and EMV Co.	Size	210x80x57mm
NFC	ISO/ IEC 14443, Type A&B	Weight	510g
<b>Camera</b>		Operating Temperature	-20°C - 60°C
Front Camera	5M Pixel, AF, Support to scan 1D, 2D barcode	Storage Temperature	-30°C - 80°C
Rear Camera	5M Pixel, AF, Support to scan 1D, 2D barcode	Printer	Built-in-58mm Thermal Printer