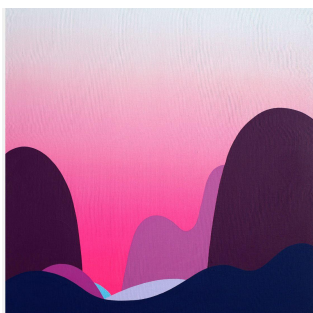


SKY HIGH

NEW PAINTINGS BY
MATT MURPHY

-
PARK HOUSE
HOUSTON, TEXAS

-
APRIL
2024

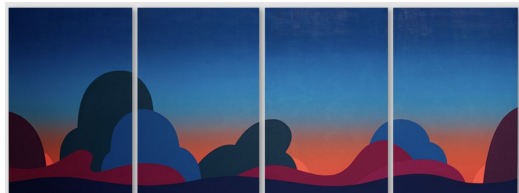


Evening walk

40" x 40

Gouache on linen on panel

\$8,000



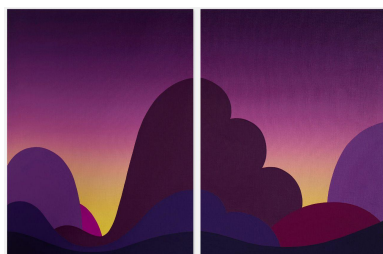
The way home

160" x 60"

(4 panels - each 40" x 60")

Gouache on linen on birch panel

\$18,000



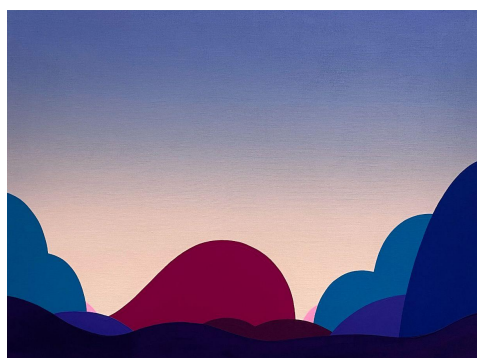
The majestic

60" x 40"

(2 panels - each 30" x 40")

Gouache on linen on birch panel

\$10,000

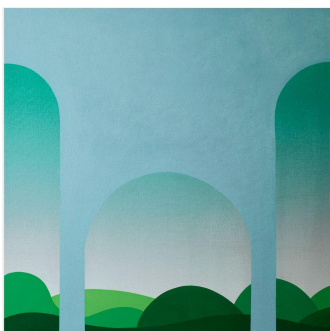


The lookout

40" x 30"

Gouache on linen on birch panel

\$7,000



Landscape Architecture

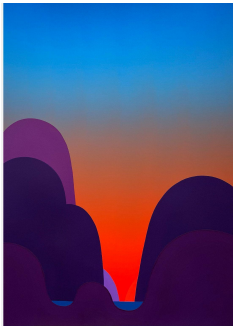
40" x 40

Gouache on linen on birch panel

\$8,000

For all sales, please contact: info@mattmurphyart.com

For questions about the work or commissions, please visit mattmurphyart.com



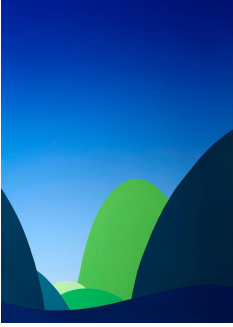
Morning

30" x 40"

Gouache on paper

\$7,000

(framed)



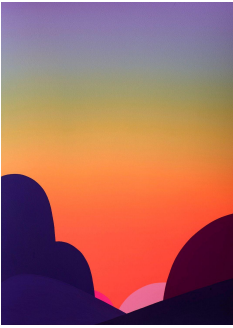
Noon

30" x 40"

Gouache on paper

\$7,000

(framed)



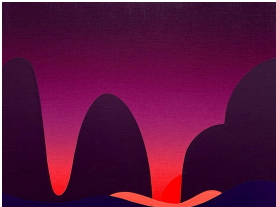
Night

30" x 40"

Gouache on paper

\$7,000

(framed)

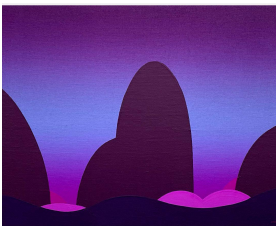


Aglow 1

20" x 16"

Gouache on linen on birch panel

\$4,000

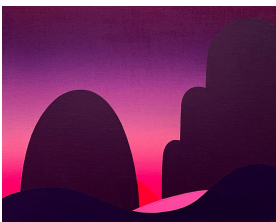


Aglow 2

20" x 16"

Gouache on linen on birch panel

\$4,000



Aglow 3

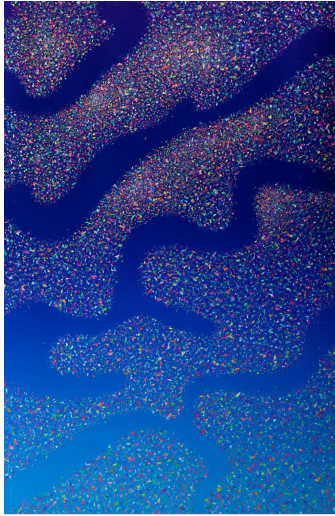
20" x 16"

Gouache on linen on birch panel

\$4,000

For all sales, please contact: info@mattmurphyart.com

For questions about the work or commissions, please visit mattmurphyart.com



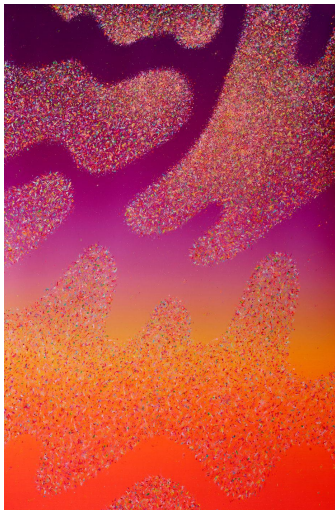
Star Party 1

40" x 60"

Gouache on paper

\$12,000

(framed)



Star Party 2

40" x 60"

Gouache on paper

\$12,000

(framed)



Star Party 3

40" x 60"

Gouache on paper

\$12,000

(framed)

For all sales, please contact: info@mattmurphyart.com

For questions about the work or commissions, please visit mattmurphyart.com